



Education Profile

Our Practice

Organisational Details

07 839 1254 | info@sandh.co.nz | www.stilesandhooker.co.nz
PO Box 718 | Level 1, 214 Collingwood St, Hamilton

Directors



Iain Brown
Engineering Director



Roger Baker
Engineering Director



Tony Wade
Engineering Director



Glenn McHardie
Architectural Director

Associates



Ian Gilby
Architectural Associate

Our Services

- Architecture
- Structural Engineering
- Civil Engineering
- Fire Design
- Interior Design
- Project Management
- Master Planning
- Environmental Sustainable Design

As Architecture and Engineering Lead Consultants, we work in partnership with other professional consultants to ensure that new projects meet our standards of excellence.

We have invested time into establishing relationships with the industry's finest consultants in Mechanical, Electrical and Quantity Surveying (alongside others) in order to achieve top-notch outcomes for our clients.

About Us

Stiles and Hooker is a leading Architecture and Engineering company, committed to designing and delivering quality built environments that contribute to the success of the organisations we serve.

Our team of dedicated professional Architects and Engineers are driven to create 'world-class' environments in which people *Work, Live, Learn* and *Play*.

You can depend on us.

Our practice has a proven track record that spans over 35 years, designing buildings both in New Zealand and overseas.

We stand out in the Architecture and Engineering market.

The point of difference that sets us apart from other firms is the fusion of Architecture and Engineering we offer under one roof; this allows for a truly collaborative and innovative process where the specialist skills of each member of the team interweave to deliver optimal results for our clients.

We design high-end buildings that win awards.

Our team of skilled professionals excel in designing Commercial, Industrial, Educational, Civic, Retail, Hospitality, Healthcare and High End Residential environments that bring together the best Architecture and Engineering to create outstanding buildings. Our successful formula works, with many of our buildings winning top awards for Architectural Design.

Designing buildings for the Food Industry is second nature to us.

We are industry leaders in designing structures for the Food Industry including Hygiene Facilities and Processing Plants for export Dairy, Meat and other Food Production Industries in New Zealand and overseas. We have designed processing facilities for Fonterra, Westland Milk Products, Synlait Milk, Oceania Dairy and Delegat Winery, among others. In these industries, time is even more critical. We understand this; our excellent document processing systems and attention to detail means we have a record of delivering on time.

We believe in Artistic Innovation working hand-in-hand with Science.

Our Architects lead the process of creating innovative built spaces in urban and rural environments, where art works hand-in hand with science.

We guide our clients from building concept stage to full realisation, giving advice and leadership along the way, optimising available capital and the building site parameters to help in the success of your building project. We love what we do and we believe it shows.



Our Values: Integrity, Team, Quality, Customer Focus, Passion & Balance



Design Essence

“We believe that a building should reflect the unique characteristics of its location, function and the identity of the people for whom it is built.”

Whether your project is big or small, we engage with you, our client, to identify your values and overall identity. This helps us to ensure we create an environment that best suits your needs and expectations.

Our team gains great satisfaction in creating buildings of enduring quality that add immense value to the lives of the people that interact with them.

Environmentally Sustainable Design

We are committed to the implementation of Environmentally Sustainable Design Practices (ESD) for our projects.

We encourage our clients to adopt Green Star initiatives into their projects.

Quality Assurance



We use the ‘latest and greatest’ technical tools.

Our in-house technologies are continually audited to ensure they are up-to-date; this means we consistently utilise the latest technical tools, enhancing our organisation’s capacity to deliver exceptional projects.

We keep abreast of the latest trends.

Our professionals and technicians keep abreast of new developments in design trends, building processes, materials and technologies to ensure they are equipped to provide you, our clients, with the best advice and ultimately great buildings.

You can be assured of quality and peace of mind when we work with you.

We provide the Quality Assurance you deserve, being registered with TELARC New Zealand (ISO 9001) 2015.

Our Approach

We Listen.

We focus on effective listening, enabling us to determine your requirements and desires from project inception to the full realisation of your project. We are a personable group of professionals who you can chat with in confidence.... come and enjoy the process with us.

We Collaborate.

We pride ourselves on getting projects off to a decisive start by collaborating with key players early on during the design process. Not only do we do that, we have also taken the proven benefits of collaboration a step further, gathering the best and most dynamic Architectural and Engineering minds under one roof. This team effort will deliver optimal results for your project.

We Innovate.

For our talented team, using innovation to come up with smart solutions that help our clients do things better, is part of everyday life. We look for continual improvement so the solutions we offer are both creative and effective for our client’s projects.

We Deliver.

We have a proven track record, with industry respect for the thorough level of documentation we provide and the sound management of projects. We are motivated to deliver projects for our clients that strike the right balance between quality, cost-effectiveness and timely delivery.

Our People



“ Finding clever solutions and helping our clients do things better is part of everyday life here. ”



Iain Brown
Engineering Director
Qualifications:
ME (Civil), CENG (UK),
MStructE, MIPENZ



Roger Baker
Engineering Director
Qualifications:
BE (Civil) Hons,
MIPENZ



Tony Wade
Engineer Director
Qualifications:
NZCE (Civil)
BE (Civil) (Hons)
MIPENZ, CPEng IntPE (NZ)



Glenn McHardie
Architectural Director
Qualifications:
ANZIA, Reg Arch,
BArch



Ian Gilby
Architectural
Associate
Qualifications:
NZCD (Arch)

Our Awards



Thomson House

- ADNZ | Resene Architectural Design Awards - Highly Commended



Kauaeranga Visitor Centre

- NZ Wood People's Choice Award
- NZ Wood Timber Design Award for Commercial Architectural Excellence
- NZIA Award Waikato/BOP for Public Architecture



Kaimai Cheese Co Ltd

- NZ Master Builders National Gold Commercial Award



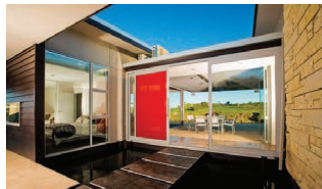
Anselmi Showhome (Glenn McHardie)

- ADNZ Regional Residential New Home under 250m²
- ADNZ Resene Colour Award



Waikato Snooker and 8-Ball Club

- NZIA Resene Local Award for Commercial Architecture



Bunyard House (Glenn McHardie)

- ADNZ Regional Residential Alterations, Winner
- ADNZ Regional Residential Interior, Commended
- ADNZ Regional Residential Alterations, Commended



Inframax Offices

- NZIA Resene Local Award for Commercial Architecture



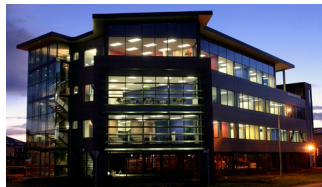
Waikato Innovation Park

- Dulux Colour Award
- NZ Master Builders National Award (\$2-5 million)
- NZIA Resene Local Award for Commercial Architecture



Butel Park House (Glenn McHardie)

- ADNZ Regional New Dwelling, Commended



Ecolab Offices

- NZ Master Builders National Gold Reserve Award for Commercial (\$2-5 million)
- NZIA Resene Local Award for Commercial Architecture



Clandeboye Dryer No. 3

- NZ Concrete Society Commendation, Monte Craven Building Award



Tainui Group Holdings Offices

- NZIA Resene Local Award for Commercial Architecture
- NZIA Resene Colour Award



HBHS Frank Sargeson Centre

- NZIA Resene Local Award for Educational Architecture



Vertex New Factory and Offices

- NZIA Resene Colour Award



Arcus Family Bach (Glenn McHardie)

- NZIA Regional Award
- NZIA National Award



ArtsPost Art Gallery

- NZIA Resene Branch Award for Architecture
- Property Council of NZ Award

Educational Projects



Curious Cubs Childcare, Hamilton
(2014)
\$500k



Waihi Academy Intl. School (2010)
Administration Block, Dormitories,
Hall, Classrooms
\$40million



Hamilton Boys' High School (2010)
Fitness & Training Centre
\$6.3million



Hamilton Boys' High School (2009)
Frank Sargeson Centre
\$1million



Te Kauwhata College (2007)
Science, Technology and
Admin Blocks, Fitness Centre,
Accessibility Masterplan
\$2.6million



**Ti Akau Ki Papamoa Primary
School (2006)**
\$160k



Hamilton Boys' High School (2002)
Technology Block
\$1.3million



Hamilton Boys' High School (2000)
Sports Pavilion
\$750k



Otumoetai College (2002)
Toilet, Bicycle Enclosure, Maori
Studies, Performing Arts Block,
Science Block, Technology Block,
Library
\$10million



Te Puke High School (2002)
Administration, Food Technology,
Toilet, Technology, Performing Arts,
Science Blocks & Special Needs Unit
\$5.5million



Tauranga Girls' College (2001)
Technology Block, Administration
Block, Gymnasium
\$5.2million

Other Projects

Aberdeen School
Cultural & Community Centre

Bellevue School
Administration Block and Carpark

Bethlehem School
Administration Block and Carpark

Cambridge Middle School
Classrooms

Church College
Gymnasium

Fairfield Intermediate School
Auditorium

Glenview School
Library

Greerton Village School
Administration and Computer Blocks

Hamilton Boys' High School
Science Block Addition

Hamilton Girls' High School
Malins Block, Administration Block,
Student dormitories

Hamilton West School
Information Technology Block and
Alterations / Upgrades

Hillcrest High School
Gymnasium

Hukanui School

Katikati Primary School
Classrooms

Katikati College
Administration and Maths Block

Melville Primary School
Administration Block

Mt. Maunganui Intermediate
Computer Block

Nawton School
Administration Block

Putaruru Intermediate School
Library Upgrade

Onehunga Primary School
Hall

(Glenn McHardie at Architecture Brewer Davidson)

Rotorua Intermediate School
Technology Block and Classrooms

Taumarunui High School
Nelson Block

Tauriko Primary School
Classrooms

Te Kowhai School
Library

Thames High School
Redevelopment works

Waerenga School
Classrooms Refurbishment



Curious Cubs Childcare Centre

Hillcrest, Hamilton

Completed 2014, \$500k value



Extension to an existing building that had already shifted from residential to offices and now a childcare centre.

Focus around creating enough space to cater for demand and the Ministry's regulations, with inclusion of a pop out lean to.

The outcome is a light and open space full of life and vitality... happy kids, happy parents!



stilesandhooker.co.nz

07 839 1254

info@sandh.co.nz



Waihi Academy

Waihi

Completed 2010, \$40m value



Stiles and Hooker have been involved in the construction of Waihi Academy new International School since 2007.

The \$40 million project involves a new main hall and auditorium, student dormitories, classrooms and an administration and library block.



stilesandhooker.co.nz

07 839 1254

info@sandh.co.nz



HBHS - Fitness & Training Centre

Hamilton Boys' High School, Hamilton,
Completed 2009, \$6.1m value



Stiles and Hooker's relationship with the Hamilton Boys' High School Board of Trustees developed strongly with a number of successful completed projects which exceed the school's expectations.

A prominent site and the client's requirement for a contemporary building that still visually connects to the school's existing built form were important factors when considering this new gymnasium.

This project will substantially increase the school's existing gymnasium facilities by providing a new gym, changing room facilities, staff offices, fitness/weights centre and integrating the school's existing two small gyms as part of the finished building.



stilesandhooker.co.nz

07 839 1254

info@sandh.co.nz



HBHS - Frank Sargeson Centre

Hamilton Boys' High School, Hamilton
Completed 2009, \$1m value

Stiles and Hooker's relationship with The Hamilton Boys' High School Board of Trustees has developed over the past 9 years with a number of successful completed projects which exceed the schools' expectations.

While originally intended to be an "international" block to accommodate the needs of foreign students, the Frank Sargeson Centre brief was revised and extended to include the development and future expansion needs of the Hamilton Boys' High School English Language Department.

Stiles and Hooker's goal was to take an otherwise fairly conservative building and add interest and give it a dimension of character to create a less static architecture and communicate "difference" in a positive light.

Awards

NZIA Resene Local Award For Architecture (Education)



stilesandhooker.co.nz

07 839 1254

info@sandh.co.nz



Te Kauwhata College

Te Kauwhata

Completed 2007, \$2.6m value



Te Kauwhata College remodeling included the design and reconstruction within the constraints imposed by existing buildings, for the purpose of maximising funding allocation.

The construction works were managed through a Guaranteed Maximum Price (GMP) Contract as to provide budget certainty to the School Board of Trustees. The redevelopment works included an extension and retrofit to the Science, English and Maths facilities and remodeling of the Library and Administration buildings, and a community Health & Fitness upgrade.



stilesandhooker.co.nz

07 839 1254

info@sandh.co.nz



Te Akau Ki Papamoa Primary

Papamoa

Completed 2006, \$160k value



Te Akau Ki Papamoa Primary School was designed to accommodate a growing community in Tauranga.

Built on a greenfield site, this was the first school in New Zealand to be designed from the new primary school building code. The project required working with tight cost constraints and master planning, with provision for future growth. The architectural design established a strong and unique identity that became the focal point for the new community.



stilesandhooker.co.nz

07 839 1254

info@sandh.co.nz



HBHS - Technology Block

Hamilton Boys' High School, Hamilton
Completed 2009, \$1.3m value



Stiles and Hooker's relationship with The Hamilton Boys' High School Board of Trustees has developed over the past 9 years with a number of successful completed projects which exceed the schools' expectations.

The Technology Centre Development was generated from a change in teaching strategies for the technical curriculum from Engineering and Woodwork based trade and technical drawing, to embrace the move toward Design and Technology with materials research and development. The building was completed in 2002.



stilesandhooker.co.nz

07 839 1254

info@sandh.co.nz



HBHS - Sports Pavilion

Hamilton Boys' High School, Hamilton
Completed 2000, \$750k value



Stiles and Hooker's relationship with The Hamilton Boys' High School Board of Trustees has developed over the past 9 years with a number of successful completed projects which exceed the schools' expectations.

The Hamilton Boys' High School Sports Pavilion is an extension to existing changing rooms which were located adjacent to the sports playing fields. The original building was damaged by fire.

The design accommodated of additional ground floor changing rooms with the upper floor encompassing a function room with cantilevered deck for viewing sporting activities, kitchen, academy learning room, community sports room and additional toilet facilities. The building was to reference with existing style of the surrounding school but without adhering to the form.



stilesandhooker.co.nz

07 839 1254

info@sandh.co.nz



Otumoetai College

Otumoetai,
Completed 2002, \$7.4m value



A forecast roll growth up to 1800 pupils provided the platform for a total redevelopment of an existing college campus.

The constrained site posed limitations on the development. The referred brief required a Master Plan detailing alterations to classroom configurations, building positions and new buildings.

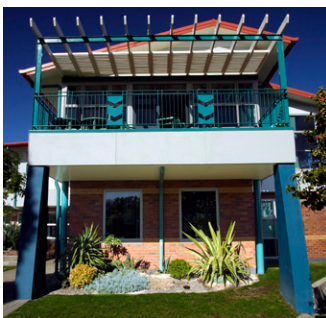
The development was completed in 2002.



stilesandhooker.co.nz

07 839 1254

info@sandh.co.nz



Te Puke High School

Te Puke
Completed 2002, \$5.5m value

A mixed development involving new buildings and extensive alterations and additions to existing structures provided design alliance to this school campus.

Each project was managed separately with the work carried out over a five-year period.

Staging and careful management of the works was essential to allow the teaching curriculum to continue unimpeded throughout the construction process.

Projects completed on the Te Puke Campus were Performing Arts, Special Needs facility, Food Technology, additions to Science Laboratory, Commerce, Classrooms and a new Administration building.



stilesandhooker.co.nz

07 839 1254

info@sandh.co.nz



Tauranga Girls' College

Tauranga
Completed 2001, \$5.2m value



Stiles and Hooker had been involved on the Tauranga Girls' College campus for the previous two years prior to being engaged to provide development planning and design of a large multi-storey teaching space, administration extension and gymnasium extension.

A development plan was established in 1997 to cater for taking this school to a potential roll of 1600 girls.

The first phase of construction was to complete the three level teaching space comprising of 23 equivalent classrooms, total value \$4.6m.

The administration extension was a complex addition to and alteration of three existing buildings which had a diverse range of activities, total value \$1.3m.

Similarly, the new gymnasium was a significant alteration to the existing gymnasium with a total value of \$1.3m.



stilesandhooker.co.nz

07 839 1254

info@sandh.co.nz