

DELEGAT'S STATE OF THE ART MARLBOROUGH WINERY

A new \$70m facility has taken shape in the heart of Marlborough's Wairau Valley and is one of New Zealand's largest and most technologically advanced wineries..

Richard Bullock, Manager of Capital Projects at Delegat's Wine Estate Ltd (Delegat's), the owners of the facility, says a considerable amount of research has gone into the project which has employed technology from the leading wine regions of the world, including California and South Australia. The best minds from New Zealand and around the world have been assembled to ensure a world-class outcome.

Richard notes that the facility has been operational since March 2006 and its first vintage has been a great success. The production capacity of the winery will be expanded over the coming years and ultimately it will be capable of producing more than 20 million litres of super-premium wine annually for the Oyster Bay brand, consisting of Sauvignon Blanc, Chardonnay, Pinot Noir and Merlot.

Richard Bullock stresses that the winemaking processes were paramount to the design of the facility, with the building fabric and structure having to 'support' these winemaking requirements. He adds that the whole wine making process has been designed to ensure the fruit is handled as gently as possible at every stage to ensure optimum wine quality.



Internal ceiling features Dimond Corrugate finished in unpainted Zincalume.

Richard says Delegat's strategy is to lead New Zealand wine category growth and establish Oyster Bay as New Zealand's leading super premium wine brand globally. The winemaking equipment and process plant have been selected on the basis of our "super premium" branding" and our objective is that the whole integrated facility will be world class.

To meet these objectives Delegat's gave the project architect, Gavin Robins of Stiles and Hooker, a very clear brief that the building elements of the facility should be sophisticated and have attitude to reflect their super premium brand while at the same time being in harmony with its environment.

There has been particular attention to detail in the design and look of the building as well as the products used to ensure the achievement of Delegat's brief. Consequently the architectural points of interest are seemingly endless.

In Gavin Robin's words... "The Delegat's Winery is of such a scale that it is diminished only by its majestic surroundings. The building is high tech in nature but is in harmony with its environment. It has life, a soul and attitude. It is sophisticated, it has beauty, it is important and it provides stimulation. This amenity will be an asset to the Marlborough District."

Travelling down the long driveway encapsulated by perfectly formed rows of grape vines you are presented with a stunning sight. Gavin Robins explains "The front entrance showcases a large curved glass wall emulating the serpentine form of the Wairau River. It provides visual movement to the building façade with the high tech reflective turquoise blue glass simulating the deep pools of the river and providing reflection. The carefully designed incline of the wall means that on approach you see reflections of the vines and trusses until it is reached and the 'life and soul' of the building interior is revealed."

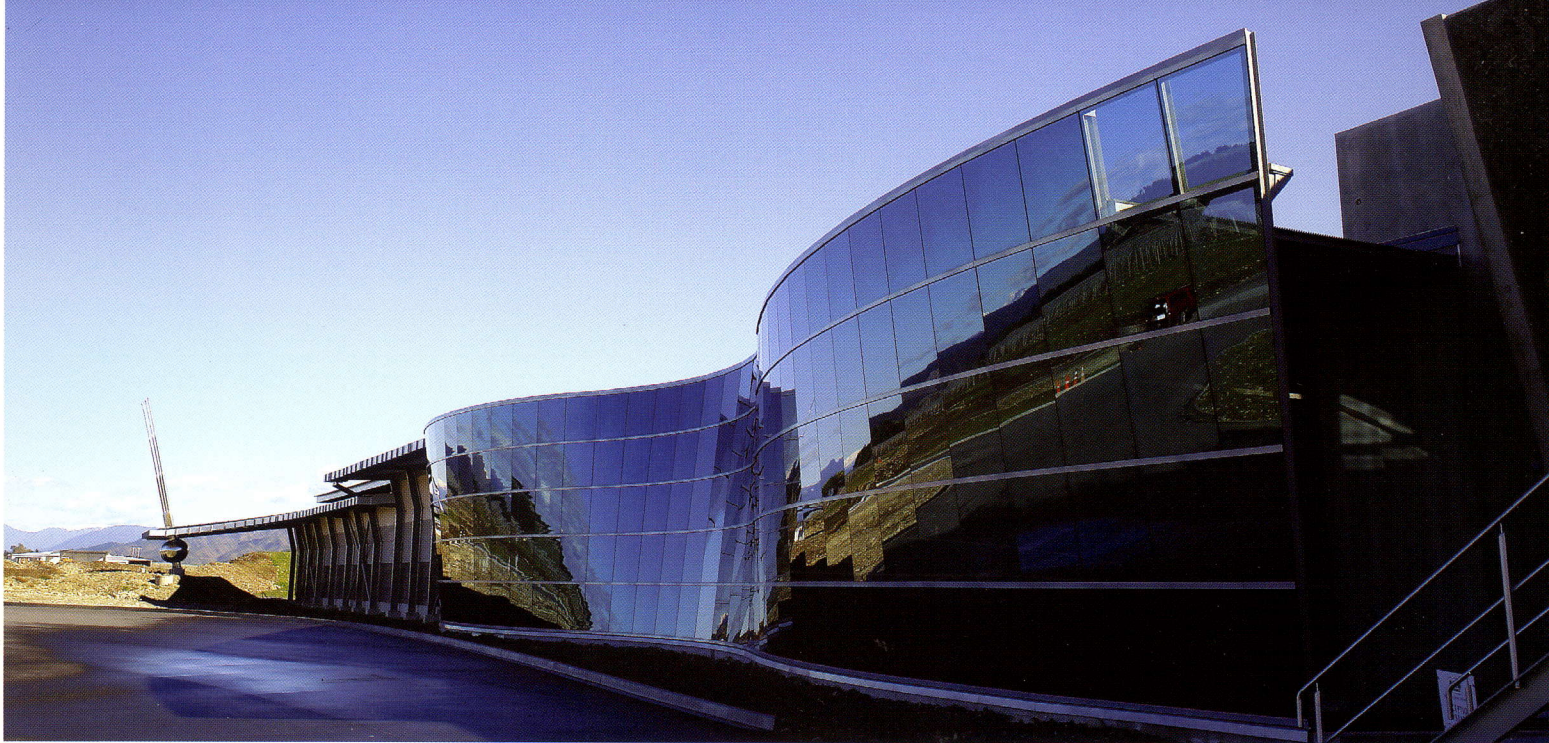
Anchoring the left hand end of the building are three imposing stainless



steel balls skewered by equally impressive steel flagpoles. These are yet another example of the innovative design involved in the project.

The centre piece of the facility is a six-storey high, 10,000 square metre temperate-controlled stainless steel cellar, housing tanks

ranging from 5,000 to 160,000 litres capacity. The height of this impressive structure is driven by the size, height and volume of the wine tanks. Richard explains that "we knew from the outset that this large building element required careful consideration architecturally to ensure it reflected Delegat's brief.

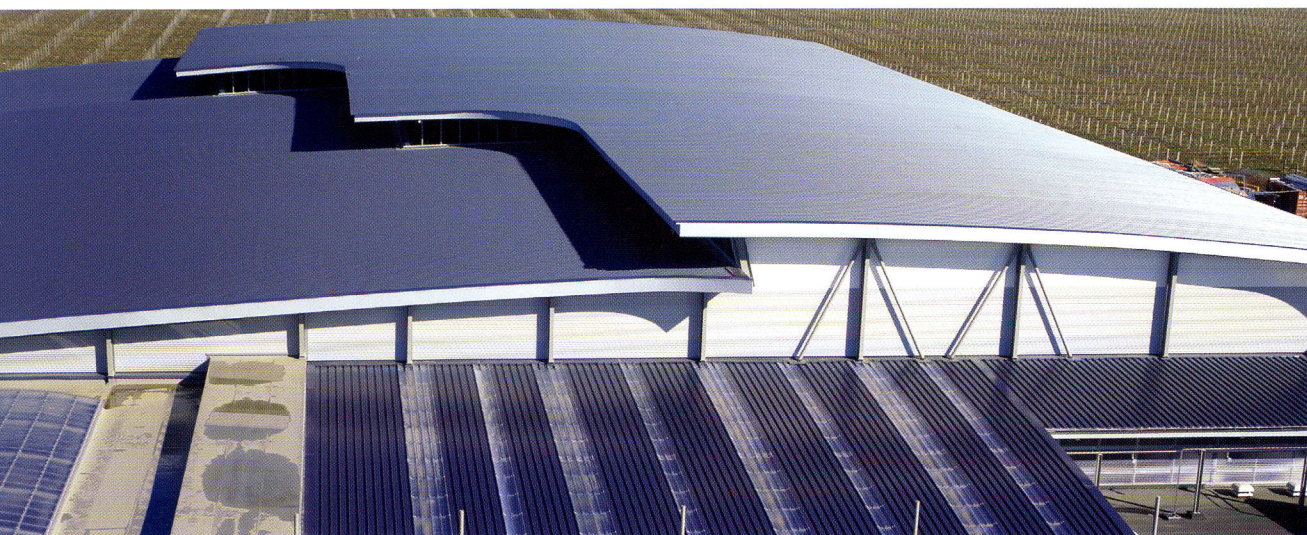


Top: Stunning curved glass wall emulates the Wairau river.
Bottom left: Three stainless steel balls anchor the left end of the building.
Bottom right: Dimond Corrugate internal wall cladding in Habitats Metallic Silver.

Gavin responded by designing roofing forms for the various building elements that are curved and layered rising from the valley floor to reflect the hills and ranges beyond, and the resulting finished product steals the attention away from the imposing Richmond ranges in the background.

'Delegat's had no preconceived ideas on roof materials', says Richard, 'and we left it to Gavin to research options and make his recommendation to us'. When Gavin came to us with the relatively new Dimond product, Dimondek 630, and we saw the potential that the long span roofing

profile would have in enhancing the visual appearance of the facility, we had no hesitation in accepting his recommendation. Richard adds that "the final aesthetic of the finished roof form has exceeded our expectations and there has been very positive feedback from all who have seen the completed facility".



The drape curved roof features 3 layers and single sheets of Dimondek 630 up to 59.45 metres in length curved over a 250 metre radius. These huge dimensions were made possible by Dimond's on-site manufacturing unit. Roofing sheets that are transported can only typically be a maximum of 30 metres long, but there are few restrictions in terms of sheet length if they are made on-site. Scott Townsend, Marketing Communications Manager for Dimond explains "The roofing at the Delegat's winery is curved over the length of the building, and given the sheet lengths involved and design of the building, Dimondek 630 is the only product in New Zealand that could have been used. The curved design combined with the uninterrupted roofing sheets and multiple levels has created a stunning finish to a spectacular building."

However, the unique roof is just one of many eye-catching design features. The 3,600m2 of cladding

used for the winery utilises Dimond Corrugate with the Colorcote ZRX paint system used on the interior side and Colorcote ZR8 on the exterior. Four different colours were specially formulated by Pacific Coilcoaters to form the external banded effect that reflects the colours existent in the surrounding environment and serves as a visual reduction of the height of the facility. On the other side of the Dimond Corrugate, Habitats Metallic Silver was chosen to give the internal walls a modern industrial look. This was in keeping with the stainless steel wine cellars and tanks as well as complementing the 10,800 square metre internal ceiling finished again in Dimond Corrugate but this time in unpainted Zincalume.

The natural lighting used over the fruit receival area was curved Dimond Corrugate in Durolite and created a 'naturally' lit area underneath for the operators while

providing an effective visual contrast with the steel roofing from above. Richard notes that every person who goes into this area of the winery spends time simply looking skyward admiring the finished outcome.

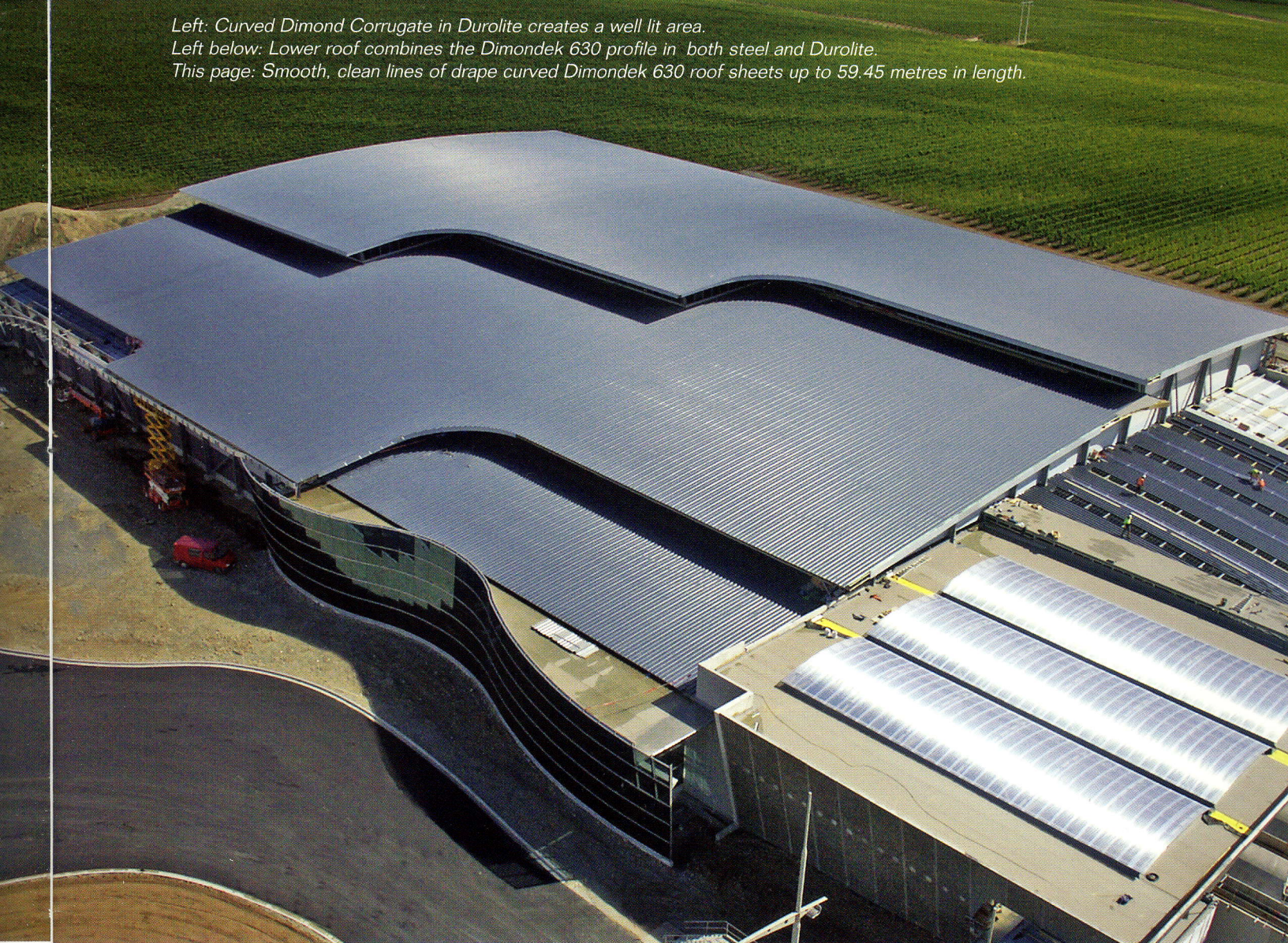
Dimondek 630 in Dimond Durolite was also used as natural lighting over the process room. DHS steel purlins were used in the roof structure and as girts in the wall structure.

The installation of the roofing, cladding and natural lighting was performed by JV Roofing Ltd, a joint venture company formed by Wayman Roofing Services Ltd and Graham Hill Roofing Ltd, both of Christchurch. Both are Dimond Certified Commercial Installers and their skill and experience were essential in ensuring the successful completion of the project. John Jones Steel Ltd of Christchurch was responsible for the steel fabrication and installation of the DHS Purlins.

Left: Curved Dimond Corrugate in Durolite creates a well lit area.

Left below: Lower roof combines the Dimondek 630 profile in both steel and Durolite.

This page: Smooth, clean lines of drape curved Dimondek 630 roof sheets up to 59.45 metres in length.



Architect: Gavin Robins,
Stiles and Hooker Ltd, Hamilton
Ph: 07 839 1254
Fax: 07 839 1255
Email:
gavin.robins@stilesandhooker.co.nz
Website:
www.stilesandhooker.co.nz

Main Contractor:
Mainzeal Construction Ltd
Ph: (03) 341 2191
Fax: (03) 341 2195
Email: mzchch@mainzeal.co.nz
Website: www.mainzeal.co.nz

Roofing, Cladding and Purlin
Manufacturer: Dimond
Ph: 0800 Dimond (0800 346 663)
Email: dimond@dimond.co.nz
Website: www.dimond.co.nz

Featured products:

Roofing: Dimondek® 630™ in
Metropolis Extreme Denim Metallic
using Colorcote® ZRX™.
Wall Cladding: Dimond Corrugate,
double sided with Colorcote®
ZRX™ on the inside and
Colorcote® ZR8™ on the outside.
4 outside colours including WAN
White, Foggy Grey, DBL
Sidewinder, Powder Blue and inside
colour is Metallic Silver.

Internal Ceiling: Dimond Corrugate
in unpainted Zincolume®

Process Room Roof: Dimondek®
630™ in Metropolis Extreme Denim
Metallic using Colorcote® ZRX™.
Dimondek® 630™ in Dimond
Durolite®

Fruit receival Roof: Curved
Corrugate in Dimond Durolite®

Steel Purlins: DHS™ Purlins

Roofing Contractors:

Wayman Roofing Services Ltd
Contact: Paul Wayman
Ph: (03) 338 0877
Fax: (03) 338 7489
Email: waymanroofing@xtra.co.nz

Graham Hill Roofing Ltd
Contact: Graham Hill
Ph: (03) 343 1030
Fax: (03) 343 1036
Email: richhill@xtra.co.nz

Steel Fabricator:
John Jones Steel Ltd
Contact: Frank Van Schaijik
Ph: (03) 366 8679
Fax: (03) 365 6015
Email: frank@jjsteel.co.nz