

The owners of this property had unusual foresight to see the potential in a disused petrol station, located 16 kilometres south of Cambridge, on New Zealand's North Island. They turned to the architects with a brief to transform the derelict property into a family home with views of Lake Karapiro and with the potential to separate the home into two sub-spaces. A smaller self-contained area would be available for guests, with the entrance and internal deck space acting as a buffer between the two zones.

There were a number of constraints with the property, including working with the existing building footprint and including the existing Hinuera stone in the design. The proximity of the busy highway to the north of the site presented a challenge to reduce the effect of noise from the road, while maximising light and sun into the home. This was achieved by building high block walls and planting out along the northern boundary to create a private and sunny courtyard with an outdoor fireplace and water features to further disguise any traffic noise.

The 290-square-metre house sits low in the landscape, which also helps avoid road noise, and over-height glazing has been used throughout to maximise light, and make the most of the stunning lake, bush and rural views.

A couple of features pay respect to the humble origins of this spectacular home: the original mechanic's bay has been turned into a wine cellar accessed via an inconspicuous opening in the living room floor that lifts hydraulically to reveal the steps down into the underground area; the Hinuera stone that once clad the petrol station exterior has been given new life in a water feature at the home's entranceway.

The self-contained guest wing on the north side of the home includes a bedroom, bunkroom, bathroom and kitchenette, and a louvre-roofed courtyard and neutral entrance space form the transition into the large airy family area. The wide deck sits almost directly on the shores of the lake. The louvred roof of the deck can be opened or closed, allowing the indoor deck area to be fully open to the outdoors.

A mixture of materials was used to construct the home, including linear weatherboards and Exotec sheet panels, which were used to complement the existing Hinuera stone.



- 1 The former petrol station nestled on the upper northern bank of Karapiro
- 2 The existing Hinuera stone ties in with the new structure and surrounding landscape
- 3 The sun-drenched north-facing courtyard provides a buffer zone to the main highway

Creative Arch Ltd

# Bunyard House

Cambridge, New Zealand





4



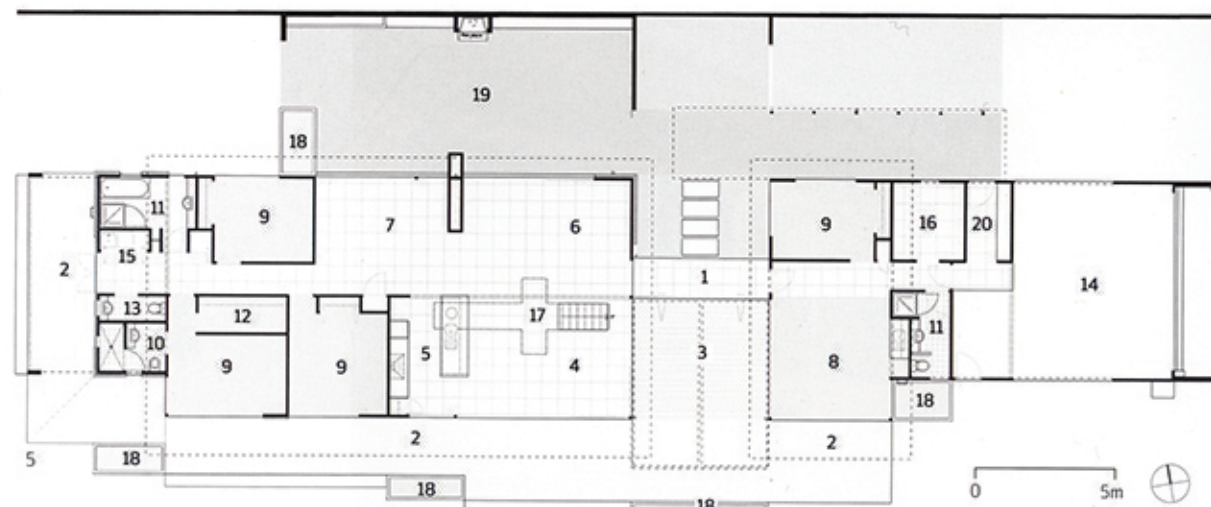
6



7

- 4 The main entrance way is enhanced by water and lighting
  - 5 Floor plan
  - 6 The main living area, which contains the hydraulic-operated lid hatch to the former mechanic's bay
  - 7 Ensuite to master bedroom
  - 8 The north-facing courtyard is lined with a buffering solid block wall containing outdoor fireplace, planting and water features
  - 9 Landscape views of Karapiro are captured from the main living area
- Photography: Lucy Gauntlett; Matt Stec

- 1 Entry
- 2 Deck
- 3 Courtyard
- 4 Living
- 5 Kitchen
- 6 Dining
- 7 Family
- 8 Rumpus
- 9 Bedroom
- 10 Ensuite
- 11 Bathroom
- 12 Walk-in robe
- 13 WC
- 14 Garage
- 15 Laundry
- 16 Bunkroom
- 17 Wine cellar (underground)
- 18 Planter box
- 19 Courtyard
- 20 Storage



9